

NIPPO

Company Guide



NIPPO LTD.

We continuously provide

"unique value"

as a technical innovator supporting our customers' manufacturing.

1+1=3 More than the sum

As our corporate statement, this expresses the aim to support and contribute to our customers' manufacturing goals by creating added value ("1+1=3 More Than the Sum") — that is, by providing "unique value"— based not simply on addition, but on our unique competitive advantage based on our "thinking of, selecting, and creating unique value" approach to develop products and services.



President
Yasuchika Iwasa

Management Policy

Since the company's founding in 1952, NIPPO LTD. has supported our customers' manufacturing both as a trading company specializing in the field of high-performance production materials and as a manufacturer of precision-molded plastic components.

"Technical innovator" describes the business style of our company — "thinking of, selecting, and creating unique value" supported by our technical capabilities and strategic thinking, with the employees who embody this style being one of our company's greatest strengths.

We constantly strive to enhance our medium- to long-term corporate value and bring about a sustainable society, continuously helping sustain convenient and prosperous lifestyles by "creating unique value" through new challenges in the development of our customer's manufacturing and technology.

Management Philosophy

Our company members share a common destiny, with all staff united by goodwill and faith. We are committed to promoting both prosperity for our company and happiness for our staff and associates by creating new value and selling it as widely as possible, so as to repay society for its blessings.

ESG Initiatives to Support Sustainable Growth

The NIPPO Group identifies risks and opportunities related to the identified materiality and promotes initiatives in line with the countermeasures formulated for each, and we strive to improving medium- to long-term corporate value and achieving a sustainable society.

Specific Initiatives to Identify Materiality

E Protecting the Global Environment



Countering Climate Change

S Harmonizing with and Contributing to Society



Initiatives to Strengthen Human Capital



Creating a Workplace Environment Where Diverse Employees Can Play an Active Role

G Observance of Compliance



Continuing Compliance Awareness Programs with Auditing and Oversight

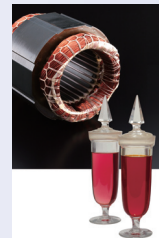
History of Value Creation

The NIPPO Group was established in 1952 based on the Sales Division of Toho Carbon Manufacturing, an authorized dealer for Hitachi, Ltd. manufacturing and selling carbon blocks. Since then, we have supported our customers' manufacturing as a "unique, value-creating company" fulfilling the dual functions of trading and manufacturing.

History of Business



Carbon parts



Varnish materials



Magnet parts



Power train components



Audiovisual (AV) equipment



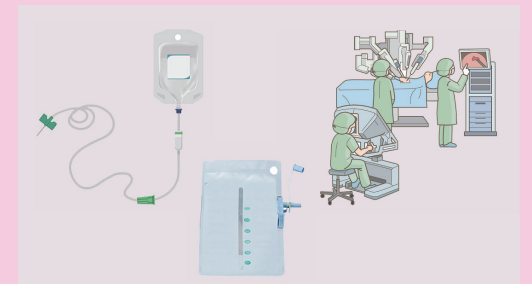
Wristwatch parts



Camera parts



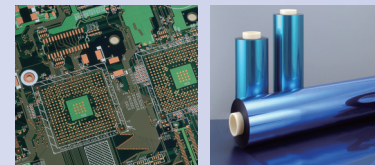
Printer parts



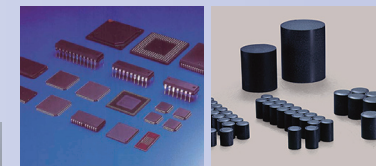
Medical device components



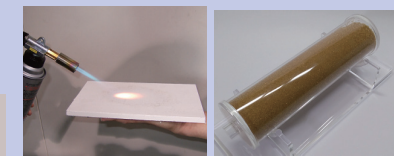
Materials for housing fixtures and equipment



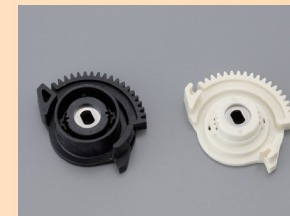
Wiring board materials



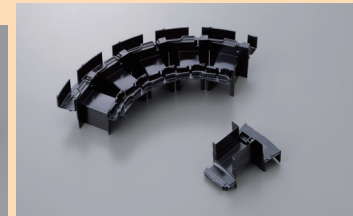
Semiconductor and electronic component materials



Fuel cell materials



Electronic system components

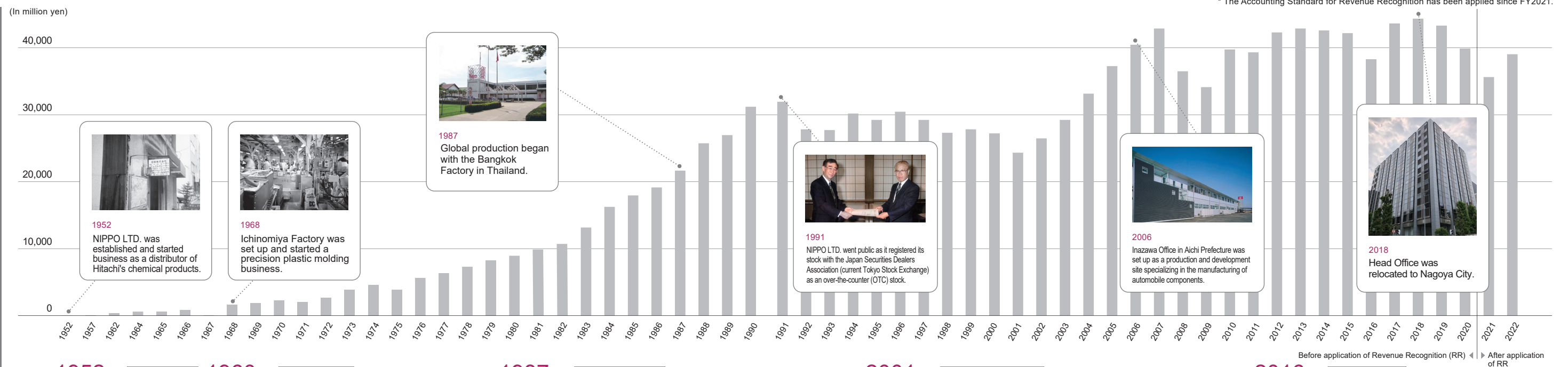


Mobility

Medical and Precision Devices

Electronics

History & Sales Development



1952 - Startup period 1960 - Growth period

- 1952 NIPPO LTD. was established. (In Osaka City, Osaka Prefecture)
- 1968 Precision plastic molding business was started.
- 1982 Development, manufacture and sale of plastic magnets was started.
- 1982 Manufacture and sale of private brand products FRP "Fuel Economy Plates" for trucks was started.

1987 - Expansion period

- 1987 Global production was started.
- 1987 Manufacture and sale of private brand products "Hysteresis Torque Roller" and "One-Way Clutch"
- 1991 NIPPO LTD. went public and began trading its stock as an over-the-counter (OTC) stock.

2001 - Revitalization period

- 2002 As part of efforts to enhance the marketing system, a business division system was introduced.
- 2004 NIPPO shares were listed on the JASDAQ Securities Exchange (current JASDAQ Market of the Tokyo Stock Exchange).
- 2006 Inazawa Office was set up in Inazawa City, Aichi Prefecture.
- 2011 Manufacture of medical devices was started in Korat, Thailand

2016 - Change period

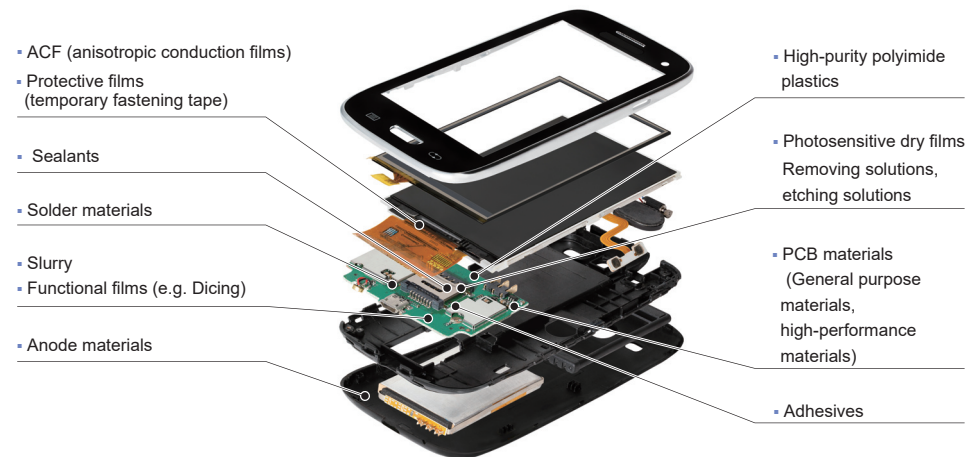
- 2016 Development of management strategy based on long-term vision and medium-term management plan.
- 2018 Head Office was relocated to Nagoya City, Aichi Prefecture.
- 2020 NIPPO shares were cross-listed on the Nagoya Stock Exchange.
- 2022 Nippo shares were transferred to new market categories: "Standard Market" on the Tokyo Stock Exchange and "Main Market" on the Nagoya Stock Exchange.

Electronics

As both a specialized trading company and a fabless manufacturer, we offer high-performance materials, processed/machined components, jigs, tools and devices to domestic and international manufacturers of electronic components and housing fixtures and equipment.

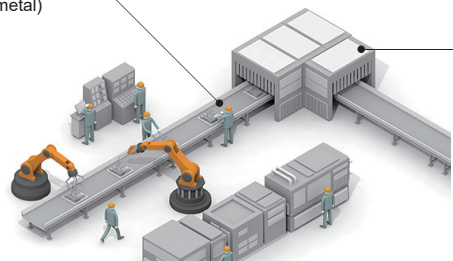
Electronic Components

We provide optimal products and services, with a wide lineup including high-performance materials and machined/processed components, as well as indirect materials and secondary materials used in manufacturing processes, to customers who manufacture electronic parts and devices used in mobile communication devices, home electrical appliances, automobiles and other products.



Machining parts/jigs and tools

- Inspection parts (plastic, ceramic, metal)
- Wafer grinding carriers
- Vespel® polyimide material
- Teflon® coatings
- Various metal surface treatments (HTC Series)
- Aluminum die casting mold parts "M-TEN" series
- Fine bubble generator
- Rectification nozzle

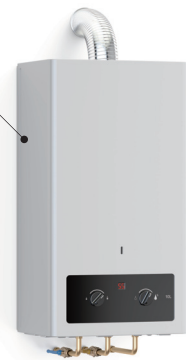


Manufacturing equipment

- Multifunctional mould cooling pipe cleaning machine "Mould channel cleaner"
- Ultrasonic cleaner
- 3D printer

Water heater and piping materials

- Foamed thermal insulation for piping
- Plastic three-way valves and joints



Materials for household fuel cells

- Insulating materials
- Ion-exchange resins



Housing Fixtures and Equipment

We provide optimal products and services, including high-performance materials, processed/machined components, assembled unit components and product design support, to customers who manufacture housing fixtures and equipment, such as water heaters and other residential plumbing equipment/devices, household fuel cells, etc.

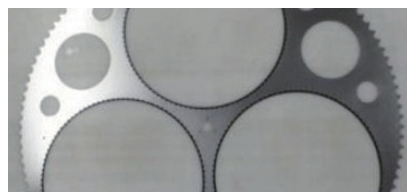
Introduction of our products

High-performance epoxy adhesive "f-Stick"



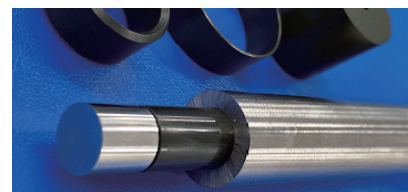
We offer various services from contracted development to mass production supply of high-performance epoxy adhesives according to customers' requests.

Wafer grinding carriers



We offer a wide lineup of grinding carriers, including those made of SUS, SK and titanium materials. We also accommodate requests for DLC (diamond-like carbon) coating and resin inners.

Aluminum die casting mold parts "M-TEN" series



We offer functional components to reduce wear and degradation of core pins, inserts, etc. for aluminum die casting molds.

Mobility

We are engaged in the manufacture and sale of various automobile components, centered on molded plastic parts and assemblies, to domestic and international manufacturers of automobiles and automobile components.

Mobility Components

We provide important safety parts/components for vehicles with a variety of power sources, such as gasoline-powered vehicles, plug-in hybrid electric vehicles (PHEV) and electric vehicles, to customers who manufacture automobiles and automobile components.

Power train components

- Fuel injectors
- Electronic throttle valve gears
- Motor insulators
- Motor terminal blocks
- Chain tensioners
- Coolant control valves
- Water pump housings
- EGR components (bobbins, gears, bypass valve coatings)
- Fuel filters

Electronic control system components

- ECU cases
- Inverters and DC/DC converter terminal blocks
- Headlight auto-leveling units
- Power window and power seat housings



Body system components

- Wiper blades
- Wiper and light operation lever switches
- Door lock actuators
- Electronic units for smart keys
- Steering angle sensor magnets

Manufacturing equipment

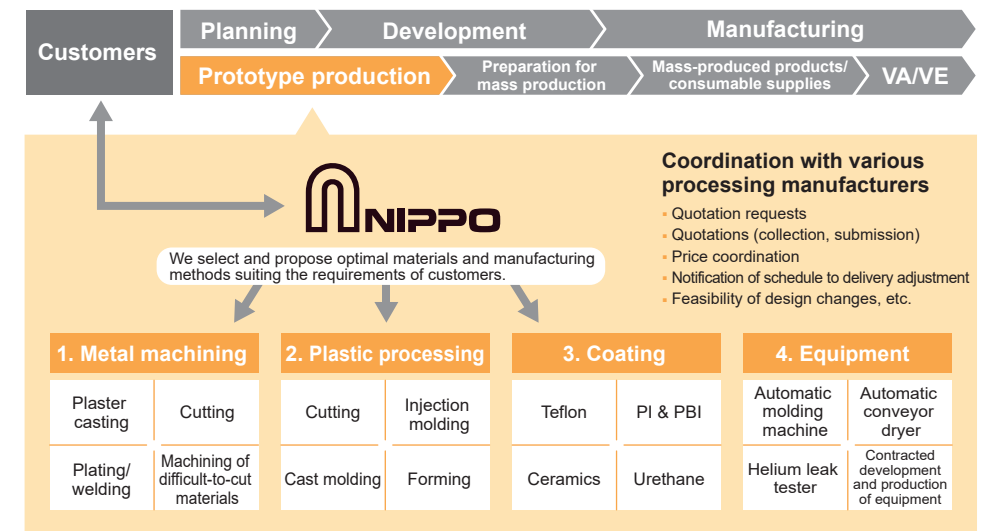
- Contracted development and production of custom equipment (automated equipment, inspection systems, transport equipment, etc.)

Prototype production

- Aluminum casting (plaster, sand molds, lost wax)
- Machined metal parts, processed plastic parts, surface treatments

Our Manufacturing Process

We handle the entire process from development, prototype production and mass production. We also accept requests from customers for the production of their manufacturing equipment.



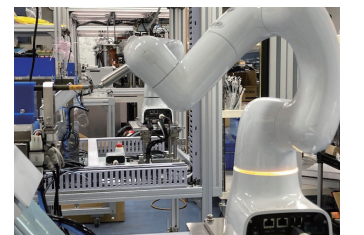
Equipment technology supporting high-quality and efficient mass production operation



Enhancement of cost competitiveness through automation of production lines

We are currently promoting the automation of our production lines using core technologies acquired by overcoming the barriers of advanced technology. We aim to roll this automation out within our group locations.

- Automatic integrated assembly line
- Labor saving in inspection processes
- Streamlining of operation processes, etc.



Medical and Precision Devices

We manufacture and sell molded plastic parts and assemblies for domestic and international medical device manufacturers, printer manufacturers, etc.

Medical Devices

We have acquired a medical device manufacturing certificate from the Thailand FDA, as well as a foreign manufacturer accreditation certificate from the Japan Ministry of Health, Labor and Welfare, and we offer disposable medical products produced in clean rooms for customers manufacturing medical equipment.

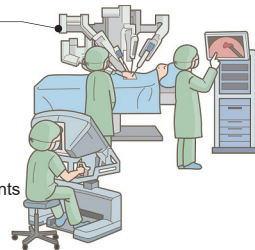
Disposable products

- Waste fluid bag units
- Drug administration units



Medical device components

- Machined metal parts, processed plastic parts, surface treatments
- Cast products
- 3D formed products
- Medical robot components



Precision Devices

We provide molded plastic parts and Teflon®-coated precision components to customers who manufacture printers, wristwatches, instant cameras, etc.

Printers and multifunction machines

- Molded plastic parts
Covers, gears, levers
- Teflon® coatings
Separator claws, stamped metal components



Other products

- Molded plastic parts
Wristwatch control buttons, housings
Instant camera mechanical parts



As an OEM manufacturer of medical device components:

We offer contracted manufacturing services of CLASS III medical device components.

Assembly technology

Adhesive technology

Surface treatment technology

Validation skills

And manufacturing knowhow cultivated through manufacturing automotive and precision components.



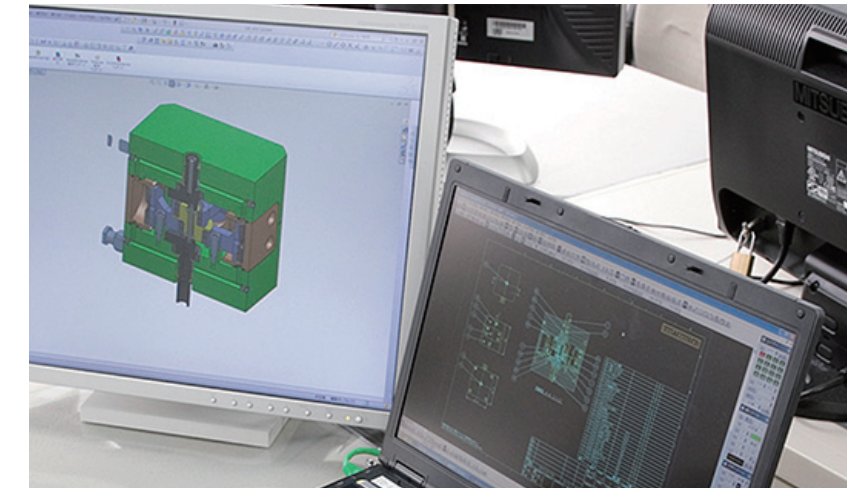
We have dedicated clean rooms for medical devices, both domestically and internationally, and have established a manufacturing system that allows us to provide high-quality products.

Design, Evaluation and Prototype Production

We provide extra value to our customers by offering contracted design, various types of prototype production, material evaluation and analysis services, etc. to solve customers' issues.

Contracted Design

We offer structural and mechanism design according to customers' requests. We propose optimal design specifications based on information about size, required functions and features, etc.

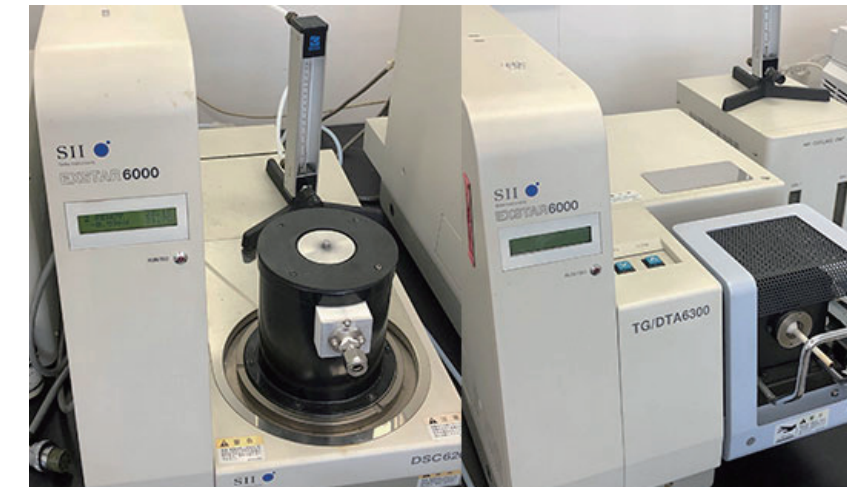


Material Evaluation and Analysis

We offer material evaluation and analysis services to propose optimal adhesive materials suited for customers' usage environments.

Support from identifying causes to finding solutions

- Confirm customers' issues and requests
- Prepare fishbone diagram
- Develop hypotheses to identify causes and prioritize them
- Make analysis and assessment based on hypotheses
- Propose solutions
- Provide solution material development support, assessment, verification and margin analysis services.



Various Types of Prototype Production

We can undertake high-precision and high-quality small-lot prototype production through precision processing and aluminum die casting of a wide variety of materials, including resin, metal, ceramic, etc. We also support customers from the selection of optimal processing materials and method, in order to "cast" our customers' needs and ideas into shape.



Business Sites and Group Information

Domestic Business Sites



Production Plants (Business area)

Inazawa Factory
 Motor vehicle, Medical devices



Iwata Factory
 Motor vehicle, Housing fixtures and equipment



Hiroshima Factory
 Motor vehicle, Wafer grinding carriers



Okinawa Factory
 Wafer grinding carriers



Bangkok Factory
 Motor vehicle




Korat Factory
 Motor vehicle, Medical devices, Precision devices, Housing fixtures and equipment, Film slitting



Malaysia Factory
 Motor vehicle



Vietnam Factory
 Motor vehicle, Precision devices, Film slitting



Jakarta Factory
 Motor vehicle



Philippines Factory
 Precision devices



Domestic Business Sites

Head Office
 MI Terrace Nagoya-Fushimi Bldg., 1-10-1 Nishiki, Naka-ku, Nagoya City, Aichi 460-0003 JAPAN
 TEL +81-52-218-3161 (reception) FAX +81-52-218-3163

Tokyo Branch
 Iwamoto-cho Toyo Bldg., 3-1-2 Iwamoto-cho, Chiyoda-ku, Tokyo 101-0032, JAPAN
 TEL +81-3-5835-4411 (reception) FAX +81-3-5835-4417

Nagoya Branch
 MI Terrace Nagoya-Fushimi Bldg., 1-10-1 Nishiki, Naka-ku, Nagoya City, Aichi 460-0003, JAPAN
 TEL +81-52-218-3111 FAX +81-52-218-3112

Kansai Branch
 PIAS Tower 9F, 3-19-3 Toyosaki, Kita-ku, Osaka city, Osaka 531-0072, JAPAN
 TEL +81-6-7711-0340 (reception) FAX +81-6-7711-0345

Tohoku Sales Office
 JMF Building Sendai 01, 4-10-3 Chuo, Aoba-ku, Sendai City, Miyagi 980-0021, JAPAN
 TEL +81-22-223-2860 (reception) FAX +81-22-267-0308

Hokuriku Sales Office
 NEWS Bldg., 3-1-10 Ekinishishinmachi, Kanazawa City, Ishikawa 920-0027, JAPAN
 TEL +81-76-224-8008 (reception) FAX +81-76-224-8020

Kyushu Sales Office
 KDX Hakata Minami Bldg., 1-3-11 Hakataeki-Minami, Hakata-ku, Fukuoka City, Fukuoka 812-0016, JAPAN
 TEL +81-92-451-8431 (reception) FAX +81-92-473-0210

Inazawa Office
 1 Teigai, Shimamoto, Sobue-cho, Inazawa City, Aichi 495-0023, JAPAN
 TEL +81-587-98-1125 FAX +81-587-98-1126

Akashi Office
 64 Nishiwaki, Okubo-cho, Akashi City, Hyogo 674-8555, JAPAN (Inside Fujitsu Akashi Plant)
 TEL +81-78-938-3131 (reception) FAX +81-78-938-3177

[Japan Affiliates]

NIPPO MECHTRONICS LTD
 474-4 Okubo, Iwata City, Shizuoka 438-0002, JAPAN
 TEL +81-538-38-1118 FAX +81-538-38-1778

NIPPO MECHATRONICS HIROSHIMA CO., LTD.
 2-1-10 Kamiseno, Aki-ku, Hiroshima City, Hiroshima 739-0301, JAPAN
 TEL +81-82-894-0878 FAX +81-82-894-8528

NIPPO METALTECH CO., LTD.
Head Office and Factory
 12-72 Suzaki, Uruma City, Okinawa 904-2234, JAPAN
 TEL +81-98-921-2144 FAX +81-98-921-2204

Yokohama Sales Office
 Osawa Hills 202, 352-7 Yatsu-cho, Kanazawa-ku, Yokohama City, Kanagawa 236-0016, JAPAN
 TEL +81-45-353-8415 FAX +81-45-782-7331

Overseas Business Sites

Thailand
Bangkok Factory
NIPPO MECHATRONICS (THAILAND) CO., LTD.
 55 Moo 18 Svintawong Road, Tambol Saladaeng, Amphur Bang Nam Prio Chachoengsao 24000, THAILAND.
 TEL +66-38-090950 FAX +66-38-090961

Korat Factory
NK MECHATRONICS CO., LTD.
 581 Moo 8 Mittraphap Road, Tumbol Sungnoen, Amphur Sungnoen, Nakhonratchasima 30170, THAILAND.
 TEL +66-44-369-718 FAX +66-44-369-722

International Headquarters
NIPPO GLOBAL MANAGEMENT CO., LTD.
 8 T-ONE Building, 15th floor, Room No.15-110 Sukhumvit40, SukhumvitRoad, PhraKhaning, KhlongToei, Bangkok 10110, THAILAND.
 TEL +66-2821-6302

Malaysia
Malaysia Factory
NIPPO MECHATRONICS (M) SDN. BHD.
 Lot Pt 2499, Kawasan Perindustrian Kecil & Sederhana, Batu 8, Mukim Setul, 71700 Mantin, Negeri Sembilan, MALAYSIA.
 TEL +60-6-7583930 FAX +60-6-7583934

Vietnam
Vietnam Factory
NIPPO MECHATRONICS (VIETNAM) CO., LTD.
 Lot 37, 38, 39 Noi Bai Industrial Zone, Quang Tien Commune, Soc Son District, Hanoi, Vietnam.
 TEL +84-24-3582-0288 FAX +84-24-3582-0388

Indonesia
Jakarta Factory
PT. NIPPO MECHATRONICS INDONESIA
 Bekasi International Industrial Estate Block C4 No.6-7 Desa Sukaresmi, kec. Cikarang Selatan, Bekasi 17550, INDONESIA.
 TEL +62-21-8990-3233 FAX +62-21-8990-3231

Philippines
Philippines Factory
NIPPO METAL TECH PHILS., INC.
 Unit 12, Phase 4, EZP Business Park, Calamba Premiere International Park (CPIP), Batino, Calamba City, 4027 Laguna, PHILIPPINES.
 TEL +63-49-530-3355 FAX +63-49-530-8048

Mexico
Mexico Branch
FNA MECHATRONICS MEXICO S.A. DE C.V.
 Tokio No.108 L904 M9, Col. Logistik C.P.79526, Mpo. Villa de Reyes, San Luis Potosi, Mexico.
 TEL +52-444-834-8330

China
Hong Kong Branch
NIPPO (HONG KONG) LTD.
 26F, Two Harbour Square, 180 Wai Yip Street, KwunTong, Kowloon, Hong Kong
 TEL +852-3521-1633

Shanghai Branch
NIPPO (SHANGHAI) LTD.
 Room 2921, Tower A, 325 Tian Yao Qiao Road, 200030 Shanghai City, CHINA
 TEL +86-21-3363-2396 FAX +86-21-3363-2390

Shenzhen Branch
NIPPO (SHANGHAI) LTD. SHENZHEN BRANCH
 Room1304, 13/F, Kerry Center, Renmin South Road, Luohu District, ShenZhen, China 518001
 TEL +86-755-8222-7230

Overseas Business Sites

